



# WaveReader

---

S P I N



**FLAT MOUNT**

**TILT MOUNT**



## INSTALLATION & ORIENTATION GUIDE

DOC-WR-SPIN-INST

# Required Tools

The tools required for the installation process are as follows:



- **#T-20 Pin-in-Star Torx Driver (for many machines)**



- **Phillips Head Screwdriver (medium) – magnetic tip is helpful**



- **3/16” Drill Bit**



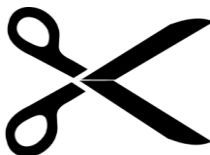
- **7/8” Stepper - Drill Bit**



- **Electric Drill – Heavy Duty**



- **Adhesive tape**



- **Scissors**



- **File (for de-burring 7/8” hole)**

# Installation Kit Contents

## WaveReader

Item	Qty	Part Number	Description
1	1	WLAU-READER-SPIN	WaveReader - SPIN

1



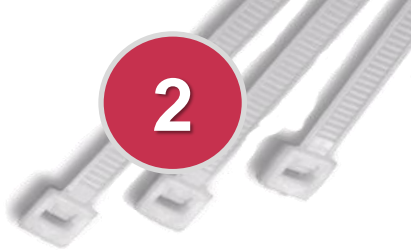
## Flat - Mounting Hardware Kit

KIT-052-6-_____			Installation hardware for WaveReader-SPIN
Item	Qty	Part Number	Description
1	4	SRW-632X.125PM	Screw 6-32 Thread x 1/8" Pan-Head, Phillips
2	3	PUR-CABLE-TIE	CABLE TIE WRAP PANDUIT PLT1.5M-M
3	3	PUR-CABTIECLAMP	CABLE TIE CLAMP PANDUIT# ABM2S-A-D

1



2



3



## Tilt - Mounting Hardware Kit *(if required and ordered)*

KIT-052-6-_____			Installation hardware for WaveReader-SPIN
Item	Qty	Part Number	Description
1	4	SRW-632X.188PM	Screw 6-32 Thread x 3/16" Pan-Head, Phillips
2	1	MFP-052-6-010	Tilt Bracket for WaveReader - SPIN

1





**!! WARNING !!**

**MAKE SURE THAT ALL POWER HAS BEEN REMOVED FROM THE MACHINE BEFORE ATTEMPTING TO INSTALL ANY HARDWARE OR CABLING!**

## Preparation

Disconnect the laundry machine from all power sources before performing any of the following steps.

**1**

Remove all screws and fasteners so that you can remove the front panel and access the inside of the machine and the control board.



**2**

Determine the best mounting location and card-swipe orientation for the WaveReader-SPIN. There needs to be at least  $\frac{3}{4}$ " clearance behind the panel where the reader will be mounted for the interface cable.



If the card-swipe orientation needs to be changed, refer to page 9 for specific instructions.

Some machines have limited space available on them to mount the WaveReader-SPIN, and the reader must be mounted low (or high) on the front panel. If this is required, a Tilt Bracket can greatly improve the viewing angle and user-experience for your customers.

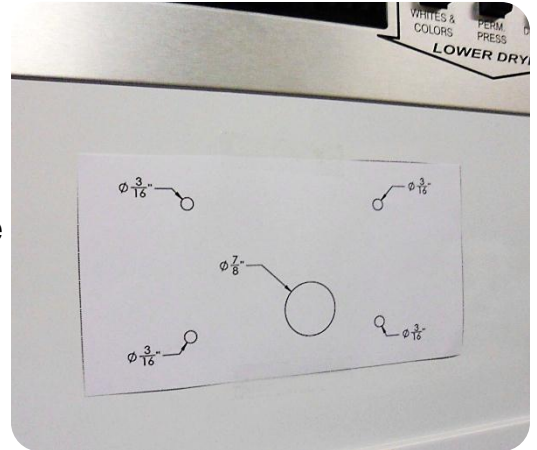
# Installation

## 3

Cut out the mounting template on page 12 (or 13) of this manual, and tape it to the front of the machine panel at the desired location. The large circles on the template indicated the appropriate card-swipe orientation (RIGHT, LEFT, TOP, or BOTTOM).

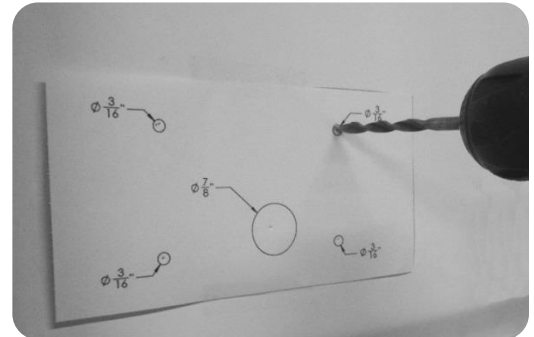


Please ensure that the 3/16" hole locations are level.



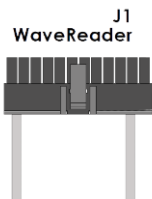
## 4

Drill the 4 3/16" mounting holes and the 7/8" cable access hole. After drilling, use a file to de-burr the holes. Especially the 7/8" cable access hole.



## 5

From inside the machine panel, feed the J1 connector of the AYS-050-6-021 cable through the 7/8" cable access hole.



If the SPIN is being FLAT mounted, proceed directly to STEP 9.

6

Pull the wiring harness all the way through the large hole in the Tilt Bracket.



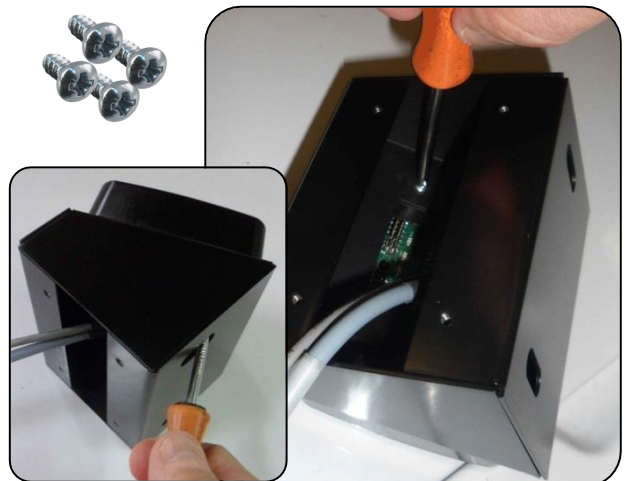
7

Connect **J1** of the interface harness to the mating connector of the WaveReader-SPIN.



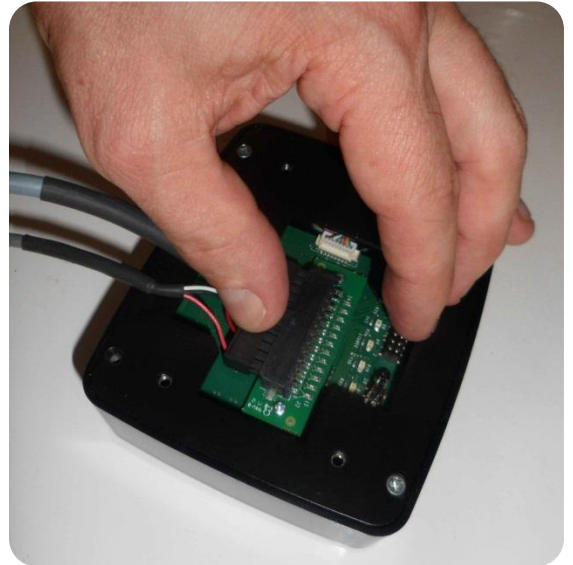
8

Attach the WaveReader-SPIN to Tilt Bracket using four of the **(3/16") SRW-632X.1188PM** screws that were provided. A magnetic tip is helpful for securing the two screws that must be accessed via the outer slots on the bracket.



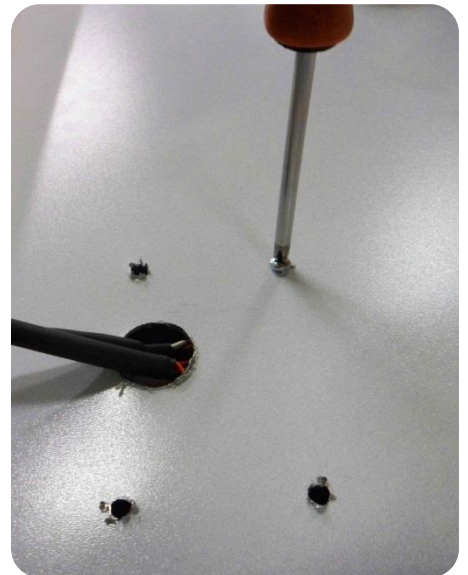
**9**

Connect **J1** of the interface harness to the mating connector of the WaveReader-SPIN.



**10**

Attach the WaveReader-SPIN to the machine panel using the (4) SRW-632X.125PM screws that were provided.



**11**

Apply the self-adhesive sticker that displays the accepted card brands (supplied) in a clearly visible location .



**12**

Reattach all machine panels.



**13**



# Finished assembly.



## Adjusting Card-Swipe Orientation

As its' name implies, the **WaveReader-SPIN** has the unique ability to be easily adapted to four different card-swipe orientation options.

If the **RIGHT** side will not work for the machine you are installing, just follow this simple steps to find the option that works the best. Note, if you are using an angled bracket, only the **RIGHT** and **LEFT** options can be used.



**right**



**bottom**



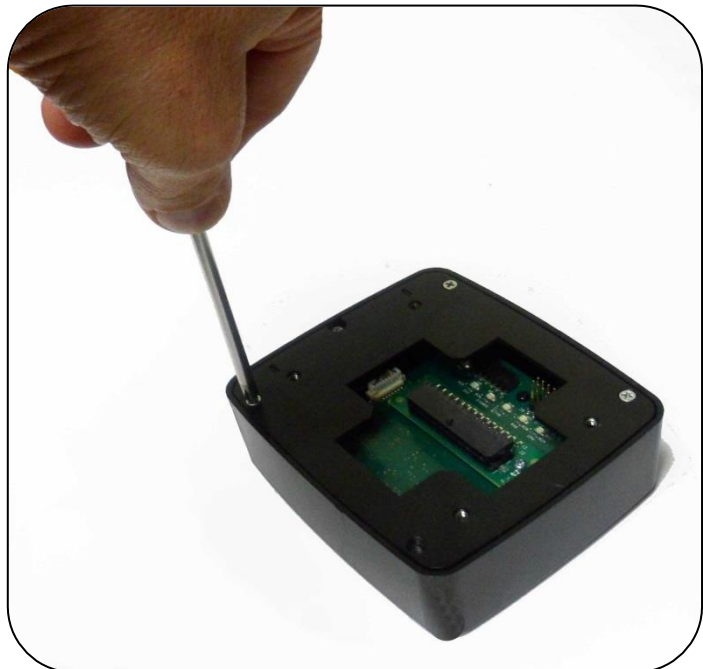
**left**



**top**

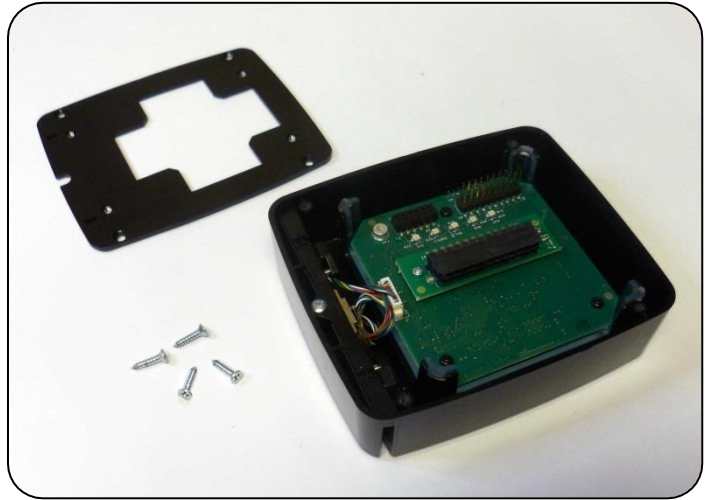
**11**

Flip the SPIN reader onto its' face, and remove the four corner retaining screws.



**12**

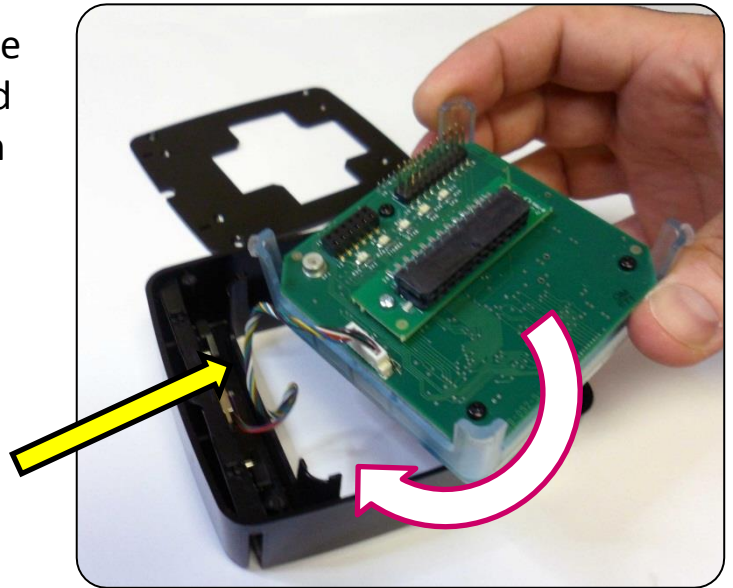
Lift back-plate off of the SPIN reader, and place it with the screws.



**13**

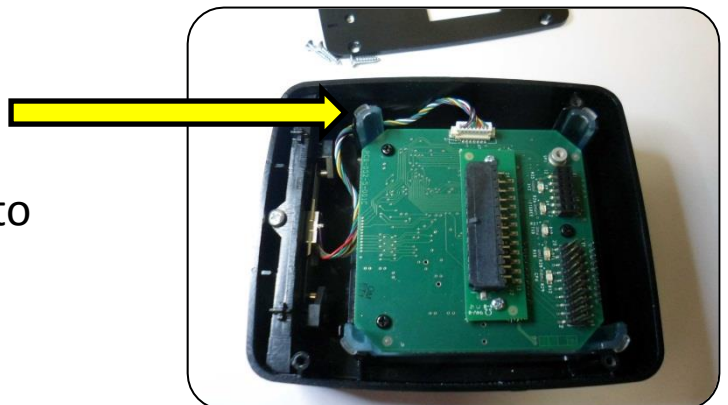
The center portion of the SPIN reader can be lifted up and rotated to match the desired Card-Swipe orientation, and placed back into the recess.

**Make sure that the swipe-bar cable is not pinched between the two pieces.**



**14**

Before re-attaching the back plate, route the swipe-bar cable to the outside of the center guide-posts.

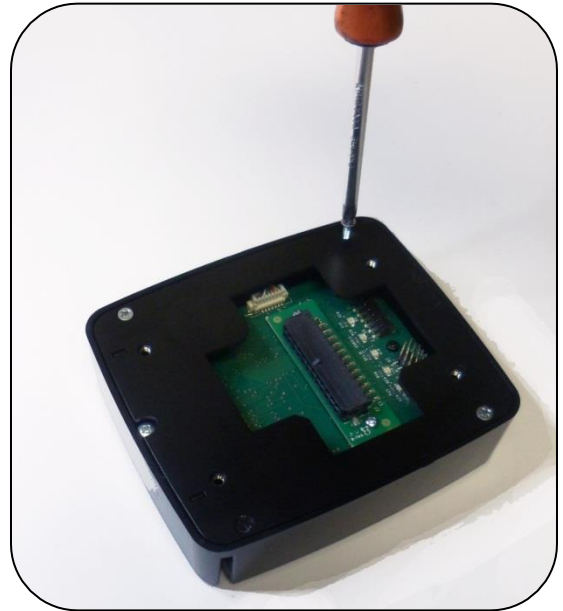


**15**

Re-attach the back plate.

**DO NOT OVER-TIGHTEN  
THESE SCREWS!**

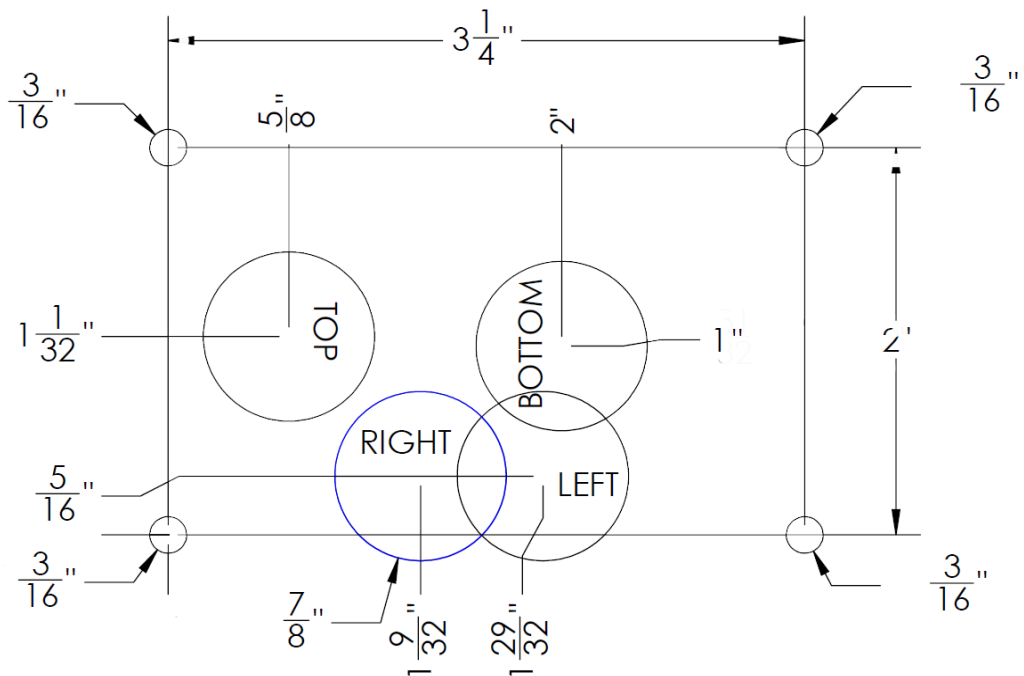
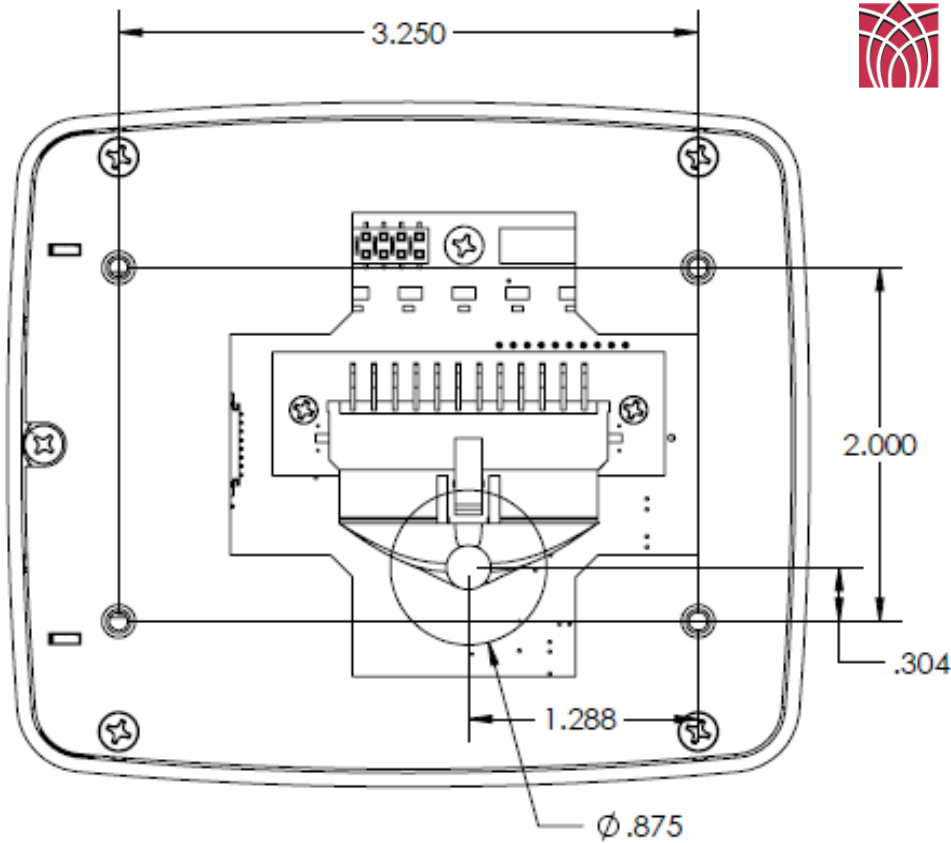
**Over-tightening the screws will damage the reader casing.**



**16**

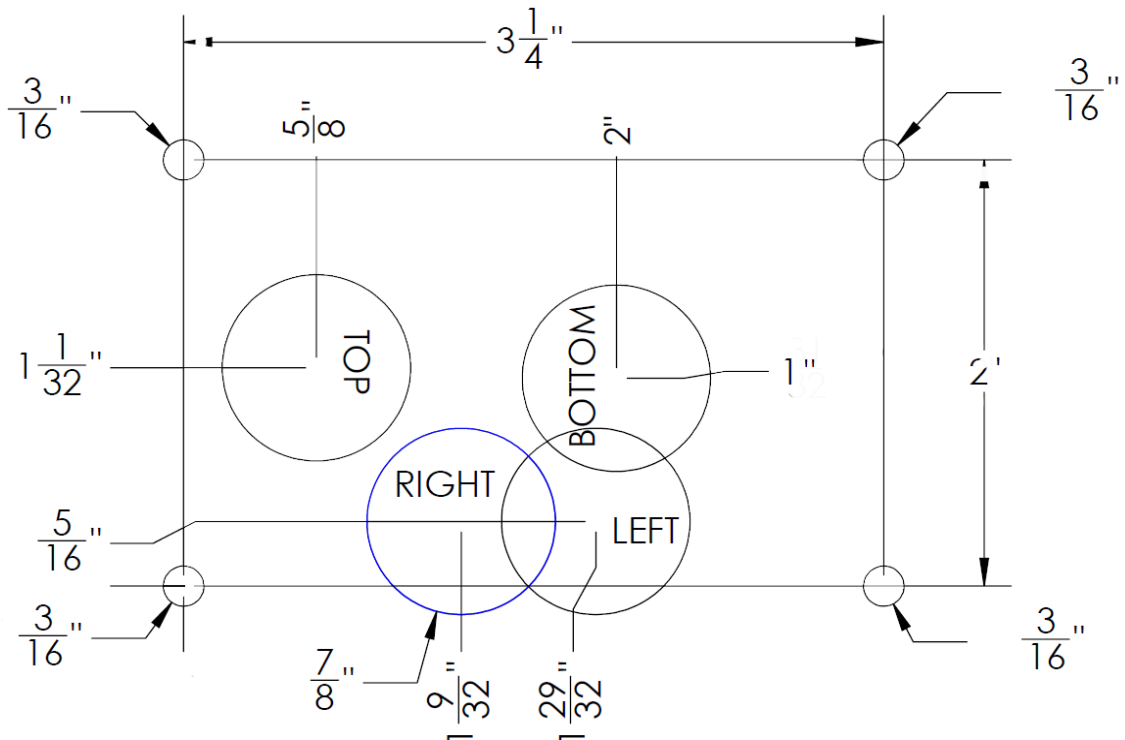
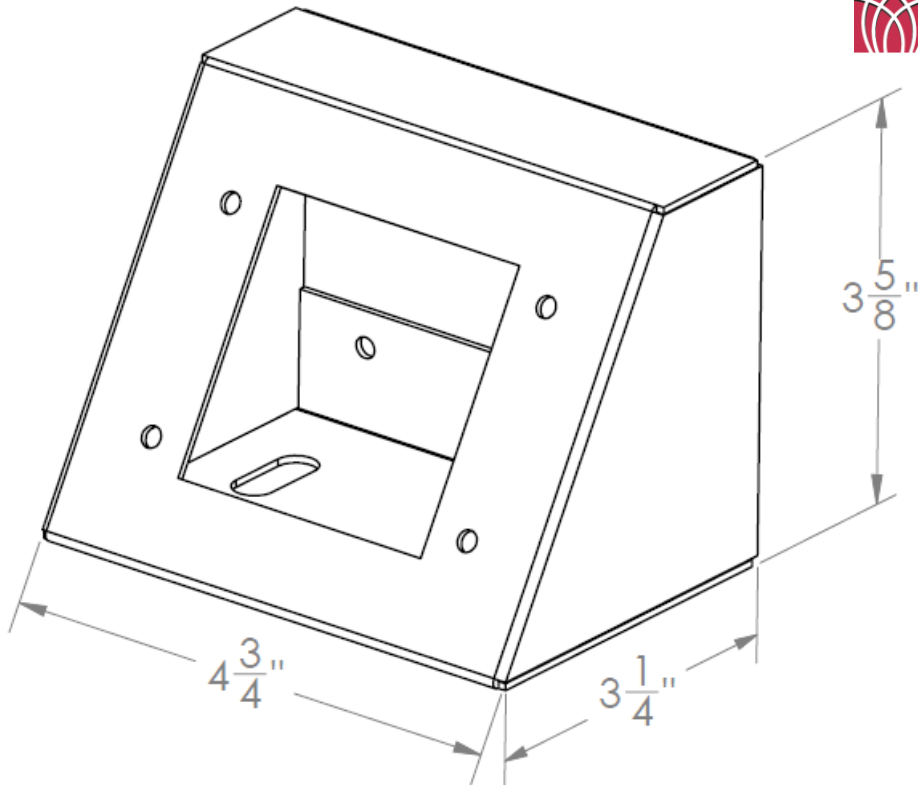
The SPIN reader can now be mounted to the machine.





Only one of the  $7/8$ " Cable Access holes will need to be drilled-out. Choose the appropriate one for the Card-Swipe position you are using. For instance, if the Card-Swipe is to be on the RIGHT, only drill the location marked 'RIGHT'.

## Wave Reader Spin – Surface Mount



Only one of the  $\frac{7}{8}$ " Cable Access holes will need to be drilled-out. Choose the appropriate one for the Card-Swipe position you are using. For instance, if the Card-Swipe is to be on the **RIGHT**, only drill the location marked '**RIGHT**'.

## Wave Reader Spin – Tilt Bracket Mount